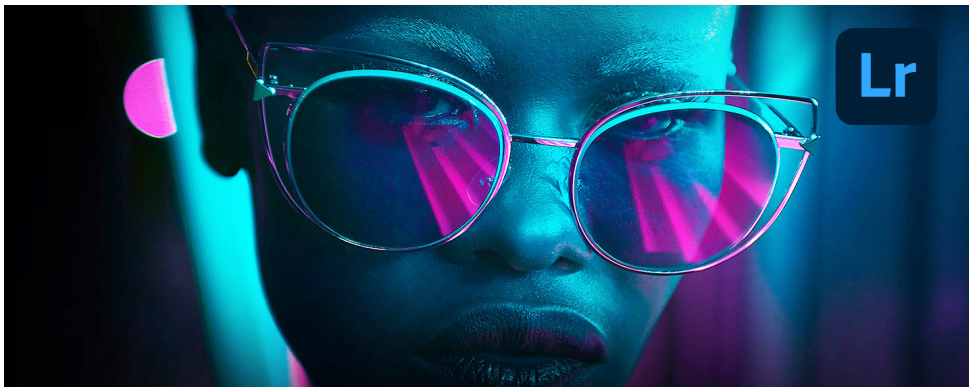


Introduction to Lightroom

Training course outline

Adobe Lightroom provides for all of your digital photography essentials in a single application.

Introduction to Lightroom training teaches the essential knowledge you need to manage your digital photography workflow.



Course summary

Provides a thorough grounding in key Lightroom techniques. Sessions cover:

- Image manipulation, colour correction and defect removal.
- Importing images and processing, managing and organising your library.
- Showcasing your images. for a single shot or an entire shoot.

Duration

Two days.

Who should attend?

Newcomers to Lightroom and novice Lightroom users.

In-class or live online

You can attend course in-person at any of our centres, or participate online from your place of work or home.

To read about our approach to online training, see armada.co.uk/live-online-training.

General information

Armada is an Adobe Authorised Training Centre (AATC), and our *Introduction to Lightroom* course is accredited by Adobe.

Lightroom courses are hosted by Adobe Certified Instructors (ACIs) with a background in photography and vast experience of using Lightroom professionally.

Introduction to Lightroom training is arranged on-request, i.e. one-to-one training or a 'closed course' for your group. This means that the training can be:

- Provided when it suits you.
- Adapted to reflect the work you're going to be doing in Lightroom, focusing on topics that are most important to you.

Whilst attending training at our centres, you'll have the use of a computer running licensed Lightroom software to practice the techniques taught. Refreshments and lunch are provided.

Course fees can be paid by card or bank transfer. We accept purchase orders from UK-registered companies and public sector organisations.

If you're self-funding your training, you can pay in staged payments, interest-free, over 12 months.

Course materials and certificate

Delegates receive:

- Comprehensive training materials.
- A certificate confirming successful completion of an accredited *Introduction to Lightroom* course.

Method of delivery

Training is designed for the busy professional, being short and intensive and combining lecture and demonstration. Practical exercises carried out under guidance help delegates learn the techniques taught.

Delegates have ample opportunity to discuss specific requirements with the trainer.

After course support

Following Lightroom training, you're entitled to 30 days' email support from your trainer.

Further information

For further details, see armada.co.uk/course/lightroom-training. For a quote and details of our availability, please contact us.

Course syllabus

See over.

Course syllabus

Topics	Sub-topics
Exploring Lightroom's interface	Understanding how Lightroom works Lightroom's workspace, panels and modules Typical workflow
Introducing the workspace	Adjusting workspace layout Using a secondary display Working with panels and view modes Personalising the identity plate
Importing images	The import process Organising images in folders Backup strategies Renaming files and applying metadata Importing via drag and drop and from watched folder
Reviewing images	Viewing and managing images Grid view and survey view Comparing and flagging images Creating a quick collection Working with filmstrip
Organising and selecting	Creating folders and subfolders Synchronising folders Using collection and smart collection Applying keyword tags, flags and ratings Using the filter bar

Topics	Sub-topics
Developing and editing	Quick develop The develop module Cropping, rotating and flipping images Creating virtual copies Removing spots Basic colour corrections Graduated filter and adjustment brush Working with external image editor
Creating slideshows	Setting up a slideshow The slideshow module Using templates Customising the slideshow Exporting a slideshow
Printing images	The print module Using print templates Customising print templates Using colour management Printing
Publishing photos on the Web	The web module Creating a web gallery Working with templates Customising your web gallery Exporting your gallery
Creating backups and exporting photos	Backing up the catalogue file and library Exporting images as JPEGs and PSDs Creating presets