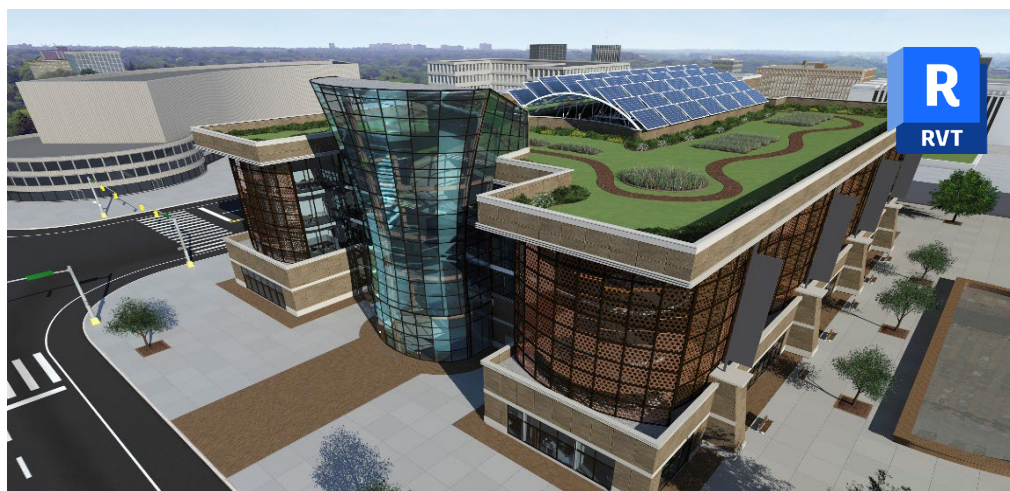


# Revit families and content creation

## Training course outline

The ability to create families and intelligent parametric content for use in your Revit models helps you realise extensive productivity improvements.

This course teaches everything you need to know to begin creating your own Revit families and content.



### Course summary

Teaches best practices for creating dynamic, flexible and data rich families and content to use in your Revit environment, whether you're designing Architecture, Structures or MEP.

You'll learn techniques from the creation of profiles and simple families through to nested fully parametric objects.

The training is practical and 'hands-on'; throughout the course you create your own content that you can take away and use on your next Revit project.

### Duration

Two days.

### Who should attend?

This course is ideal for anyone who wants to get to grips with the fundamentals of family and content creation within Revit.

Typical delegates include:

- Design professionals.
- Managers who wish to improve the workflow of interdisciplinary projects.
- Manufacturers who want to encourage use of their products.

### Prerequisites

You should have a good working knowledge of Revit, i.e. be familiar with the topics taught in *Revit Essentials* (see [armada.co.uk/revitess/syllabus](http://armada.co.uk/revitess/syllabus)) or *Revit MEP Essentials* (see [armada.co.uk/revitmepess/syllabus](http://armada.co.uk/revitmepess/syllabus)).

### In-class or live online

You can attend in-person at our centres, or participate live online from your place of work or home.

To read about our approach to online training, see [armada.co.uk/liveonline](http://armada.co.uk/liveonline).

### General information

Armada is a long-standing Autodesk authorised Training Centre (ATC), and our courses are accredited by Autodesk.

Courses are hosted by Autodesk Certified Instructors (ACIs) with vast experience of using the application professionally.

Whilst attending training at our centres, you'll have the use of a computer running licensed software to practice the techniques taught.

Refreshments and lunch are provided.

Course fees can be paid by card or bank transfer. We accept purchase orders from UK-registered companies and public sector organisations.

### Course materials and certificate

You'll receive:

- A comprehensive training guide and practice files.
- An e-certificate confirming successful completion of an accredited *Revit Families and Content Creation* course.

### Method of delivery

Training is designed for the busy professional, being short and intensive and combining lecture and demonstration. Practical exercises carried out under guidance help you learn the techniques taught.

You have ample opportunity to discuss specific requirements with the trainer.

### After course support

Following training, you're entitled to 30 days' email support from your trainer.

### Further information

See [armada.co.uk/course/revitfamcc](http://armada.co.uk/course/revitfamcc).

### Course syllabus

See over.

# Course syllabus

Topics	Sub-topics
<b>The Family Editor</b>	Getting to know the Editor UI Differences between the family and project interfaces
<b>Templates</b>	A guide to selecting the right template Family categories Hosting
<b>Framework</b>	Working planes – understanding the different options Reference lines or planes? Setting dimensions as parameters Creating additional parameters
<b>Basic family creation</b>	Creating 2D and 3D geometry Family testing Family types

Topics	Sub-topics
<b>Shared parameters</b>	Shared parameters vs family parameters vs project parameters Tags and labels
<b>Advanced topics</b>	Materials Equations Catalog creation Family type parameters
<b>MEP and other sources of content</b>	Loading and using 3D objects from other software MEP connections Labels
<b>Families and standards</b>	Background data in families COBIE standards NBS standards
<b>User-created families</b>	Supervised practice exercise to create your own families, specific to your needs